



# QSL™ Series Filter Cartridges

## *Serial Layered Design for Optimized Prefiltration*

Incorporating a polypropylene microfiber media over a polyethersulfone membrane, the serial layered QSL cartridge design offers excellent retention characteristics and extended life to provide long lasting protection of downstream final filters. By preventing early blockage of downstream filters, the QSL contributes significantly to an economical overall design of your filtration system.

### Product Specifications

**Media:** Polypropylene & Polyethersulfone

**Inner core, end caps, cage:** Polypropylene

**Gaskets/O-Rings:**

Buna-N, EPDM, Silicone, Teflon

Encapsulated Viton, Viton

**Micron rating:** 0.2, 0.5 µm

**End styles:** P (DOE), P2 (226/flat), P3 (222/flat), P7 (226/fin), P8 (222/fin), AM, NPC

### Dimensions

**Nominal lengths:**

5", 9.75", 10", 19.5", 20", 29.25", 30",  
39", 40"

(12.7, 24.8, 25.4, 49.5, 50.8, 74.3, 76.2,  
99.1, 101.6 cm)

**Outside diameter:** 2.7" (6.86 cm)

**Inside diameter:** 1.0" (2.54 cm)

**Surface Area:** 7.0 ft<sup>2</sup> (0.65 m<sup>2</sup>)

### Operating Parameters

**Maximum operating temperature:**  
176°F (80°C)

**Maximum differential pressure:**

75 psid @ 70°F (5.2 bar @ 21°C)

30 psid @ 176°F (2.0 bar @ 80°C)

**Maximum reverse pressure:**

40 psid @ 70°F (2.8 bar @ 21°C)

**Recommended change-out pressure:**

35 psid (2.4 bar)

### FEATURES & BENEFITS

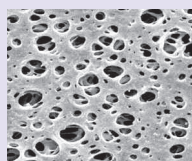
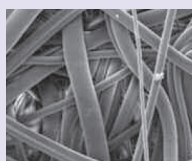
- Serial layered design — enhances capacity and simplifies prefiltration requirements
- Absolute rated (99.98%) — an ideal prefilter to 0.2, 0.45 and 0.65 micron membrane filters
- Fixed pore construction — resists dirt unloading at maximum differential pressure
- High surface area — high flow rate, and long service life — minimize maintenance cost
- Available with various gasket/O-ring materials — compatible with many fluids

### CERTIFICATIONS

- USP Class VI: Meets USP Class VI Biological Test for Plastics
- FDA Listed Materials: All materials comply with FDA Title 21 of the Code of Federal Regulations Sections 174.5, 177.1520, and 177.2600 as applicable for food and beverage contact.
- European Directive for Direct Food Contact: European Regulation No. 1935/2004 and European Regulation 10/2011: Tested for migration behavior and is suitable for contact with all kinds of foodstuffs with minimal rinse-up. Data available upon request.
- Non-fiber releasing: This filter product complies with the Title 21 of the Code of Federal Regulations (CFR), sections 210.3 (b) (6) and 211.72 after appropriate pretreatment of the filter such as flushing.

### TYPICAL APPLICATIONS

- Wine/beer bottling
- Bottled water
- Process water
- Aqueous solutions
- Active Intermediates
- Diagnostic Reagents
- Culture Media
- Cosmetics



## PERFORMANCE SPECIFICATIONS

- **Cleaning/Sanitization:** Compatible with most common chemical cleaning, sanitizing and sterilizing agents and with pH range from 1–14. Consult factory for specific compatibility information. Cartridge will withstand hot water at 176°F (80°C) at 5 psid (0.35 bar) for 30 minutes.
- **Steam/Autoclave:** Cartridges may be autoclaved for 30 minutes at 250 °F (121°C) under no end load conditions. Cartridges fitted with steam insert may be steamed for at least 10 thirty minute cycles @ 275°F (135°C) not to exceed 3 psid (0.21 bar).

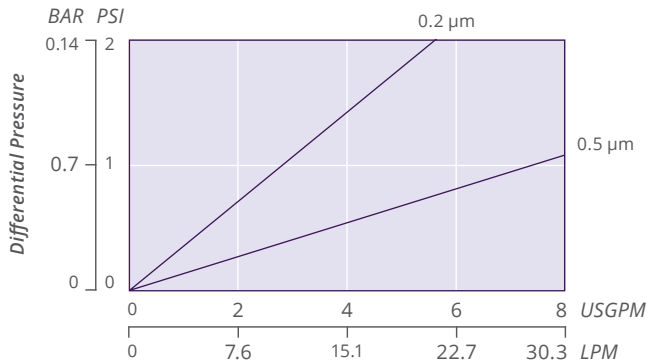
## QSL NOMENCLATURE INFORMATION

Filter Type	Retention Rating (microns)	Nominal Length (inches)	End Configuration	Gasket or O-Ring	Options
QSL Series	0.2	-5    -29.25 <sup>1</sup>	P    Double Open End	B    Buna-N	-R    Factory Rinse
	0.5	-9.75 <sup>1</sup> -30	P2    226/Flat Single Open End	E    EPDM	-I    Steam Insert
		-10    -39 <sup>1</sup>	P3    222/Flat Single Open End	S    Silicone	
		-19.5 <sup>1</sup> -40	P7    226/Fin Single Open End	T    Teflon encap. Viton	
		-20	P8    222/Fin Single Open End	T    Teflon encap. Viton (O-Rings Only) <sup>2</sup>	
		AM    Single Open End, Internal O-Ring	V    Viton		
		NPC    Double Open End, Internal O-Ring			
<b>Example: QSL0.5-20P3S-I</b>					
QSL	0.5	-20	P3	S	-I

<sup>1</sup>Available only for DOE (P) configuration    <sup>2</sup>Not available in AM style

## QSL FLOW RATE

Typical Flow Rate Clean Water at Ambient Temperature (per 10" cartridge)



For liquids other than water, multiply pressure drop by the fluid viscosity in centipoise

### FOR MORE INFORMATION

GTX-364 10-24

DISTRIBUTED BY

Customer Service/Technical Support: 1-888-353-0303

China: +86-21-5238-6576    Asia: +65-9671-9966

All information and recommendations appearing in this bulletin concerning the use of products described herein are based on tests believe to be reliable. However, It is the user's responsibility to determine the suitability for his own use of such products. Since the actual use by others is beyond our control, no guarantee, expressed or implied, is made by Graver Technologies as to the effects of such use or the results to be obtained. Graver Technologies assumes no liability arising out of the use by others of such products. Nor is the information herein to be construed as absolutely complete, since additional information may be necessary or desirable when particular or exceptional conditions or circumstances exist or because of applicable laws or government regulations. QSL is a trademark of Graver Technologies, LLC.



Graver Technologies | 200 Lake Drive, Glasgow, DE 19702 | 1-302-731-1700 | 800-249-1990

Fax: 1-302-369-0938 | info@gravertech.com | www.gravertech.com

A member of The Marmon Group—A Berkshire Hathaway Company