



Stratum® A Series Filter Cartridges

Absolute Rated Melt Blown Filters

Stratum A Series melt blown depth filters deliver 99.9% efficiency at the stated micron for the most demanding applications. By utilizing ultra fine fibers and controlled thermal bonding, the Stratum A series retains captured contaminant even at higher differential pressures.

Product Specifications

- Media: Polypropylene
- End caps/Center Core: Polypropylene
- Gaskets/O-Rings:
Buna-N, EPDM, Santoprene, Silicone, Teflon Encapsulated Viton (O-Rings only), Viton
- Micron rating:
0.3, 0.5 1, 3, 5, 10, 20, 30, 50, 70, 100 µm

Dimensions

- Nominal lengths:
5", 9.75", 10", 19.5", 20", 29.25", 30", 39", 40"
(12.7, 24.8, 25.4, 49.5, 50.8, 74.3, 76.2, 99.1, 101.6 cm)
- Outside diameter: 2.5" (6.35 cm)
- Inside diameter: 1.0" (2.54 cm)

Operating Parameters

- Maximum differential pressure:
150 psid @ 68°F (10.3 bar @ 20°C)
90 psid @ 150°F (6.2 bar @ 66°C)
35 psid @ 176°F (2.4 bar @ 80°C)
- Recommended change-out pressure:
35 psid (2.4 bar)
- Steam Sterilization:
Stratum single open end style filters may be autoclaved under no end load conditions for 30 minutes at 121°C. Filters should be cooled to normal operating temperatures prior to use.

FEATURES & BENEFITS

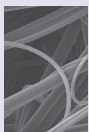
- Absolute retention ratings from 0.3 to 100 microns
- Multi-zone melt blown depth filter with a graded pore structure for maximum dirt holding capacity
- Thermally bonded fibers for high void volume and long on-stream life
- Lot traceable filters come with certificate of conformance
- 100% pure virgin polypropylene
- Molded center core for higher temperature and pressure capability
- Free of surfactants, binders and adhesives

CERTIFICATIONS

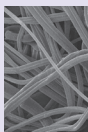
- USP Class VI: Meets USP Class VI Biological Test for Plastics
- FDA Listed Materials: All materials comply with FDA Title 21 of the Code of Federal Regulations Sections 174.5, 177.1520 and 177.2600, as applicable for food and beverage contact.
- NSF 61: Certified to NSF/ANSI STD 61 for materials requirements only — Component
- European Directive for Direct Food Contact: European Regulation No. 1935/2004 and European Regulation 10/2011: Tested for migration behavior and is suitable for contact with all kinds of foodstuffs with minimal rinse-up. Data available upon request.
- Paint Wetting Impairment Substances (PWIS)/Lackbenetzungsstörende Substanzen (LABS): Filter media tested to VDMA 24364:2018-05 standards to ensure optimal paint adhesion.

TYPICAL APPLICATIONS

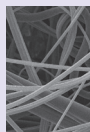
- Chemicals
- Pharmaceuticals
- Paint/Inks
- Water
- Food and beverages
- Microelectronics
- Plating
- Cosmetics
- CMP Slurry



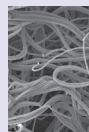
Outer pre-filter zone



Inner pre-filter zone



Final pre-filter zone



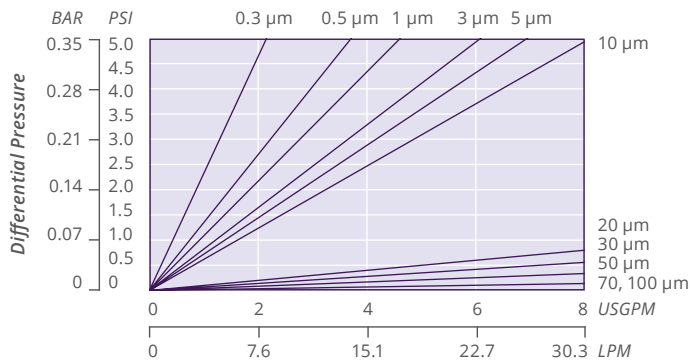
Final filtration zone

STRATUM A NOMENCLATURE INFORMATION

| Product Series | Retention Rating (microns) | | Nominal Length (inches) | | End Configuration | Gasket or O-Ring |
|------------------------------|----------------------------|-----|-------------------------|--------------------------------------|----------------------------------|---|
| STA Series | 0.3 | 20 | -5 | -29.25 | P Double Open End (Hard Endcaps) | B Buna-N |
| | 0.5 | 30 | -9.75 | -30 | P2 226/Flat Single Open End | E EPDM |
| | 1 | 50 | -10 | -39 | P3 222/Flat Single Open End | N None |
| | 3 | 70 | -19.5 | -40 | P6 Self-Seal Spring on One End | S Silicone |
| | 5 | 100 | -20 | | P7 226/Fin Single Open End | T Teflon encap. Viton (O-Rings only) |
| | 10 | | | | P8 222/Fin Single Open End | V Viton |
| | | | | P28 222 w/3 tabs/Fin Single Open End | | |
| | | | | PX Extended Core | | |
| | | | | N None (Cut Ends) | | |
| | | | | DBG Direct Bond Santoprene Gaskets | | |
| | | | | AM Single Open End, Internal O-Ring | | |
| Example: STA 0.5-30NN | | | | | | |
| STA | 0.5 | | -30 | | N | N |

STRATUM A FLOW RATE

**Typical Flow Rate Clean Water at Ambient Temperature
(per 10" cartridge)**



For liquids other than water, multiply pressure drop by the fluid viscosity in centipoise

The micron ratings shown at various efficiency and beta ratio value levels were determined through laboratory testing, and can be used as a guide for selecting cartridges and estimating their performance. Under actual field conditions, results may vary somewhat from the values shown due to the variability of filtration parameters.

Testing was conducted using the single-pass test method, water at 3 gpm/10" cartridge. Contaminants included latex beads, coarse and fine test dust. Removal efficiencies were determined using dual laser source particle counters.



Certified to
NSF/ANSI/CAN 61

REMOVAL EFFICIENCY

| Beta Ratio Efficiency | Beta 1000 99.9% | Beta 100 99% | Beta 10 90% |
|-----------------------|-----------------|--------------|-------------|
| 0.3 μm | 0.5 | 0.4 | 0.3 |
| 0.5 μm | 0.6 | 0.5 | 0.4 |
| 1 μm | 1.0 | 0.8 | 0.5 |
| 3 μm | 3.0 | 2.3 | 1.4 |
| 5 μm | 5.0 | 4.0 | 2.7 |
| 10 μm | 10.0 | 7.0 | 4.0 |
| 20 μm | 20.0 | 15.0 | 12.0 |
| 30 μm | 30.0 | 20.0 | 14.0 |
| 50 μm | 50.0 | 34.0 | 25.0 |
| 70 μm | 70.0 | 50.0 | 39.0 |
| 100 μm | 100.0 | 85.0 | 60.0 |

$$\text{Beta Ratio} = \frac{\text{Upstream particle counts}}{\text{Downstream particle counts}}$$

FOR MORE INFORMATION

GTX-238 9-24

DISTRIBUTED BY

Customer Service/Technical Support: 1-888-353-0303

China: +86-21-5238-6576 Asia: +65-9671-9966

All information and recommendations appearing in this bulletin concerning the use of products described herein are based on tests believed to be reliable. However, it is the user's responsibility to determine the suitability for his own use of such products. Since the actual use by others is beyond our control, no guarantee, expressed or implied, is made by Graver Technologies as to the effects of such use or the results to be obtained. Graver Technologies assumes no liability arising out of the use by others of such products. Nor is the information herein to be construed as absolutely complete, since additional information may be necessary or desirable when particular or exceptional conditions or circumstances exist or because of applicable laws or government regulations. TPE is a trademark of Graver Technologies, LLC.



Graver Technologies | 302-731-1700 | 800-249-1990
info@gravertech.com | www.gravertech.com

A member of The Marmon Group—A Berkshire Hathaway Company