



Crystal MBF Series Filter Cartridges

Melt Blown Filters

Product Specifications

Media: Polypropylene
End caps/Center Core: Polypropylene
Micron rating:
1, 3, 5, 10, 20, 30, 50, 75 μm

Dimensions

Nominal lengths:
5", 9.75", 10", 19.5", 20", 29.25", 30",
39", 40"
(12.7, 24.8, 25.4, 49.5, 50.8, 74.3, 76.2,
99.1, 101.6 cm)

(Other lengths available)

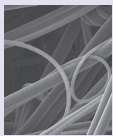
Outside diameter: 2.5" (6.35 cm),
2.63" (6.7 cm) End capped

Inside diameter: 1.1" (2.79 cm)

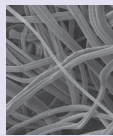
Operating Parameters

Maximum differential pressure:
65 psid @ 68°F (4.5 bar @ 20°C)
50 psid @ 100°F (3.4 bar @ 38°C)
25 psid @ 170°F (1.7 bar @ 77°C)

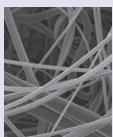
Recommended change-out pressure:
35 psid (2.4 bar)



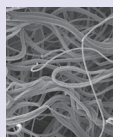
Outer
prefilter
zone



Inner
prefilter
zone



Final
pre-filter
zone



Final
filtration
zone

An economical, melt blown filter element that can be used in a wide range of applications. The Crystal MBF depth filter is constructed of 100% polypropylene media for chemical compatibility with a variety of process fluids. The unique Crystal Core prevents collapse even at elevated temperatures.

FEATURES & BENEFITS

- Available in nominal ratings from 1 to 75 microns
- Formed Crystal Core for excellent collapse strength
- Graded pore construction for long on-stream life
- Melt blown media resists dirt unloading as differential pressure increases
- Non-shedding
- High dirt holding capacity
- Economical depth filtration
- Free of binders, adhesives and surfactants
- Highly consistent performance

CERTIFICATIONS

- USP Class VI: Meets USP Class VI Biological Test for Plastics
- FDA Listed Materials: All materials comply with FDA Title 21 of the Code of Federal Regulations Sections 174.5, 177.1520 and 177.2600, as applicable for food and beverage contact.
- NSF 61: Certified to NSF/ANSI STD 61 for materials requirements only — Component
- European Directive for Direct Food Contact: European Regulation No. 1935/2004 and European Regulation 10/2011: Tested for migration behavior and is suitable for contact with all kinds of foodstuffs with minimal rinse-up. Data available upon request.
- Paint Wetting Impairment Substances (PWIS)/
Lackbenetzungsstörende Substanzen (LABS): Filter media tested to VDMA 24364:2018-05 standards to ensure optimal paint adhesion.

TYPICAL APPLICATIONS

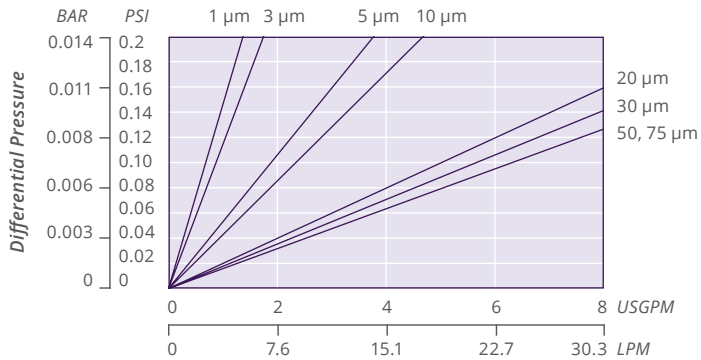
- RO Prefilters
- Wastewater
- Food and beverages
- Chemicals
- Blowdown post filter
- Radwaste
- Aqueous solutions
- Inks

CRYSTAL MBF NOMENCLATURE INFORMATION

Filter Type	Retention Rating (microns)		Nominal Length (inches)		End Configuration	Gasket or O-Ring
CMBF Series	1	20	-5	-29.25	N None (Cut Ends)	N None
	3	30	-9.75	-30		
	5	50	-10	-39		
	10	75	-19.5	-40		
Example: CMBF 10-20NN						
CMBF	10		-20		N	N

CRYSTAL MBF FLOW RATE

Typical Flow Rate Clean Water at Ambient Temperature
(per 10" cartridge)



Certified to
NSF/ANSI/CAN 61

FOR MORE INFORMATION

GTX-339 9-24

DISTRIBUTED BY

Customer Service/Technical Support: 1-888-353-0303

China: +86-21-5238-6576 Asia: +65-9671-9966

All information and recommendations appearing in this bulletin concerning the use of products described herein are based on tests believe to be reliable. However, It is the user's responsibility to determine the suitability for his own use of such products. Since the actual use by others is beyond our control, no guarantee, expressed or implied, is made by Graver Technologies as to the effects of such use or the results to be obtained. Graver Technologies assumes no liability arising out of the use by others of such products. Nor is the information herein to be construed as absolutely complete, since additional information may be necessary or desirable when particular or exceptional conditions or circumstances exist or because of applicable laws or government regulations. TPE is a trademark of Graver Technologies, LLC.



Graver Technologies | 200 Lake Drive, Glasgow, DE 19702 | 1-302-731-1700 | 800-249-1990

Fax: 1-302-369-0938 | info@gravertech.com | www.gravertech.com

A member of The Marmon Group—A Berkshire Hathaway Company