

GBPES-Series Wine and Beverage Grade Polyethersulfone

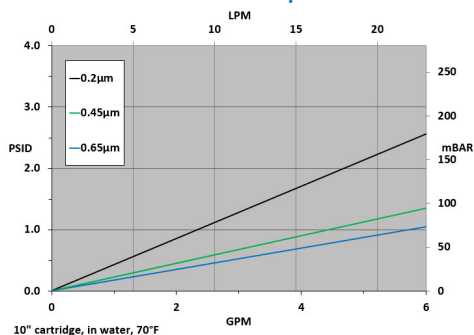
GBPES-Series High Purity Wine and Beverage Grade Polyethersulfone Filter Cartridges are optimized for the requirements of the wine and beverage industry. The polyethersulfone membrane offers high flux density and low protein-binding and maintains the organoleptic characteristics of the treated product, making it an ideal choice for production of consumables. Cartridges are flushed with ultra-high purity water to achieve the most stringent requirements for extractable substances. Designed to tolerate repeated hot water sanitization and *in situ* steam sterilization cycles for maximum service life. Each element is integrity tested to ensure optimal performance. Manufactured in a clean-room environment to maintain high standards of purity and cleanliness.

Microbial Retention Performance

Rating	Challenge Microbe	Log Reduction Value (LVR)
.2μ	<i>Serratia marcescens</i>	6.5
.45μ	<i>Sacchromyces cerevisiae</i>	6.6
.65μ	<i>Sacchromyces cerevisiae</i> , <i>Lactobacillus</i>	7.8

*Independently tested in accordance with ASTM F838

Flow Rate vs Pressure Drop



Ordering Information

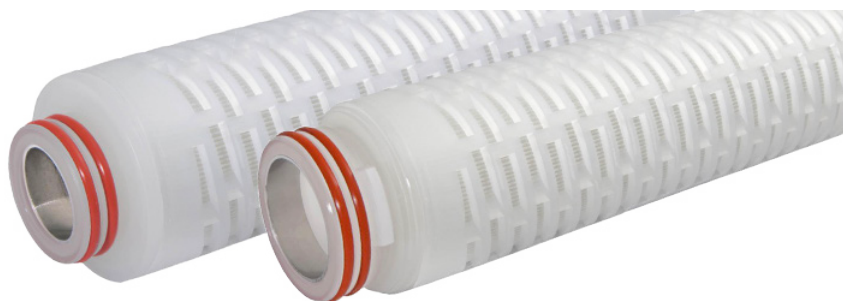
GBPES	Rating(μ)	A	Length	C	End Cap Style	O-Rings/Gaskets	-	Adders
	0.2		10" (25.4cm)		2 = DOE Flat Gasket ^{1 2}	B = Buna-N		CS = 316SS Compression Spring
	0.45		20" (50.8 cm)		3 = 222 w/Fin	E = EPDM		
	0.65		30" (76.2 cm)		4 = 222 w/Flat Cap	S = Silicone		
			40" (101.6 cm)		6 = 226 w/Flat Cap	T = Teflon® Encapsulated Viton® ¹		
					7 = 226 w/Fin	V = Viton®		
					28 = 222 3-Tabs w/ Fin	Z = Teflon® Encapsulated Silicone ²		

1 - When ordering with DOE Flat Gasket, gasket style "T" is not available

2 - When ordering with DOE Flat Gasket, gasket style "Z" is not available

DISCLAIMER: Filtration data presented is representative of performance observed in controlled laboratory testing. It is not given as a warranty, specification or statement of fitness for use. Specific performance can vary widely depending on contaminant type, fluid properties, flow rates and environmental conditions. It is recommended that users conduct thorough qualification testing to assure the product functions as required. For additional technical support, a product Performance Guide is available upon request.

SV_GBPES_082124



Typical Applications

- Wine
- Beer
- Juices
- Soft Drinks
- Bottled Water

Construction Materials

Membrane..... Polyethersulfone
Support Media Polypropylene
End Caps..... Polypropylene
Outer Support Cages..... Polypropylene
O-Rings/Gaskets..... Buna, EPDM, Silicone
Teflon® Encapsulated Viton®¹, Viton®,
Teflon® Encapsulated Silicone²

Dimension (Nominal)

Length 10 to 40 in (25.4 to 101.6 cm)
Outside Diameter 2.7 in (7.06 cm)

Operating Conditions

Change Out ΔP (recommended) 35 PSID (2.4 bar)
Temperature (max) 176°F (80°C)
Differential Pressure (max) 72 PSID at 68°F
(5.0 bar at 20°C)

Sanitization/Sterilization

Hot Water 185° - 203°F (85°-95°C) for 30 min
max ΔP 7 psi

In-Line Steaming 273°F (134°C) for 30 min
max ΔP 7 psi, 100 cycles

Chemicals: Peracetic acid, chlorinated alkaline products, bleach, sulfur dioxide and hydrogen peroxide at typical sanitization concentrations and temperatures.

Note: All cartridges provided standard with an integral reinforcement ring to prevent deformation of the o-ring adapter during steam sterilization or hot water sanitization processes.

Toxicity

All polypropylene components meet the specifications for biological safety per USP Class VI – 121°C for plastics.

Food Safety Compliance

Materials of construction comply with FDA regulations for food and beverage contact use as detailed in the US Code of Federal Regulations, 21CFR. Materials used to produce filter media and hardware are deemed safe for use in contact with foodstuffs in accordance with EU Directives 1935/2004, and/or 10/2011.